

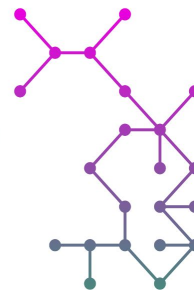
< A+ >

Alliance



f < A+i > r

Feminist AI Research Network





Background: Systemic gender, racial and intersectional bias sit at the core of current AI & Algorithmic Decision-Making processes born in the North and replicated in the South.

VISION

Create New Models & New Ways of conceiving AI to correct for historic inequities & bring social programs + policies into the 21st century.





MISSION

Use AI & ADM to deliver equality outcomes designed with inclusion at the core, create new opportunities & proactive, innovative correction of inequities.

FEMINIST AI GOAL

Concretely transform or invent delivery of systems (economic, social, legal, technical) that employ technology or policies.





RESEARCH FOCUS

- >**How** new AI & ADM data, algorithms, models, networks, policies or systems could concretely & positively impact social problems, improve Quality of Life, & correct for historic exclusion.
- >**Prototype** using design justice principles, widen collaborations with communities, academics, activists, technologists.
- >**Pilot** most effective prototypes with new public & private sector partnerships to actively innovate and correct for historic inequities.
- >**Build** a field of inter- and intra-regional multi-disciplinary teams, deepen understanding of each region's distinctive needs, leverage learnings on collective solutions, & nurture the roots of Feminist AI in the global south.





RESEARCH QUESTIONS

>**Feminist research:** What would feminist research methodologies look like in AI?

How can feminist methodologies result in different approaches to AI in developing countries?

What questions would emerge, who would now be included, how would they be engaged?

>**Data Collection:** Where does traditional data collection go wrong?

From a feminist point of view, what would inclusive data collection look like Before, During, After data is gathered?

>**Social Protections:** How do social protections work in the developing world?

Which ones specifically affect women and girls?

>**Cultural Norms:** What are the combinations of norms, history, and procedure that perpetuate ways of working and have led to amplification of existing inequalities?





INDICATIVE RESEARCH AREAS

>Social Protection/Benefits

- including Subsidy, Digital ID, Land Tenure/Use, Pensions, Conditional Cash Transfer, Housing Lotteries...
- Health
- Education
- Justice

>New algorithmic applications of

- Indigenous
- Decolonial
- Traditional
- Combinatorial Models etc....

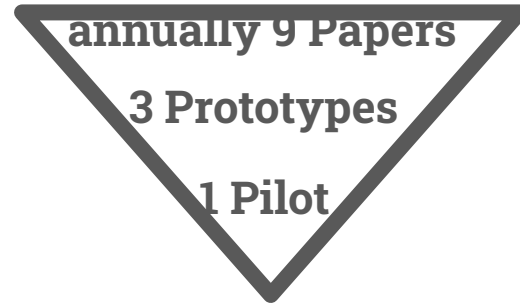
>Geospatial Mapping, Climate Change





<OBJECTIVE 1>

Abundant body of **Quality Research** across regions





<OBJECTIVE 2> New Knowledge Creation

>Research Phase 1:

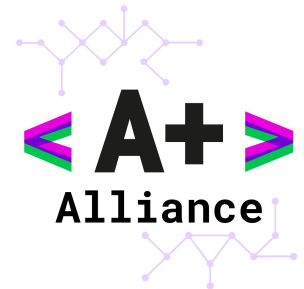
- >Multidisciplinary teams

>Prototype Phase 2:

- >Expand multidisciplinary teams to include wider range of civil society, feminists, climate justice activists, digital rights groups, & local communities to b
- >working to meaningfully include women and girl's leadership

>Pilot Phase 3:

- >Build alliances with institutional partners to collaborate on pilot projects and seed sustainability and potential scale.





<OBJECTIVE 3> Feminist AI Global South facing Network

>Incubate and grow **global south network**

>Feminist scholars, economists, data scientists, social scientists, machine learning experts, urban planners, lawyers, activists...

>Stimulate collaboration, extend field knowledge

○





f<a+i>r Network Methodology

>f<a+i>r Network **alternates Global + Regional monthly meetings**

- >Global and Regional Curation Year 1 surrounds collaborating on Feminist Framework for AI
- >Guest Speakers, Debates, Readings on Key Questions
- >Tech outreach into social sciences spaces
- >Social Science outreach into Tech spaces
- >Side Events in multilateral + Feminist spaces





Coordination across other Networks

- > **Connect** individuals and networks
- > **Share** and improve methodologies
- > **Cross pollinate** initiatives
- > **Explore** cross-sectoral collaborations
- > **Leverage** commonalities + differences of Feminist AI on the continent and its subregions.
- > Research produced by Feminist AI efforts **highlighted** by + discussed with the F<a+i>r Network.
- > **Invite** selected researchers invited to be a part of F<a+i>r network global convenings
- > <A+> **Global Directory**

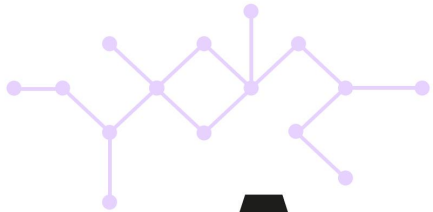




KEY OUTCOMES

- >**Activate** regional capacity and expertise
- >**Create** & sustain multidisciplinary academic, public + private sector AI **collaborations**
- >**Share** research and findings on Feminist AI
- >**Disseminate** research with global outreach events
- >**Influence** policy on the global and national level.





< A+ >

Alliance



f < A+i > r

Feminist AI Research Network

